

# ARLO



HERE & NOW MIAMI POP-UP EXHIBIT



# PRIMA MATERIA



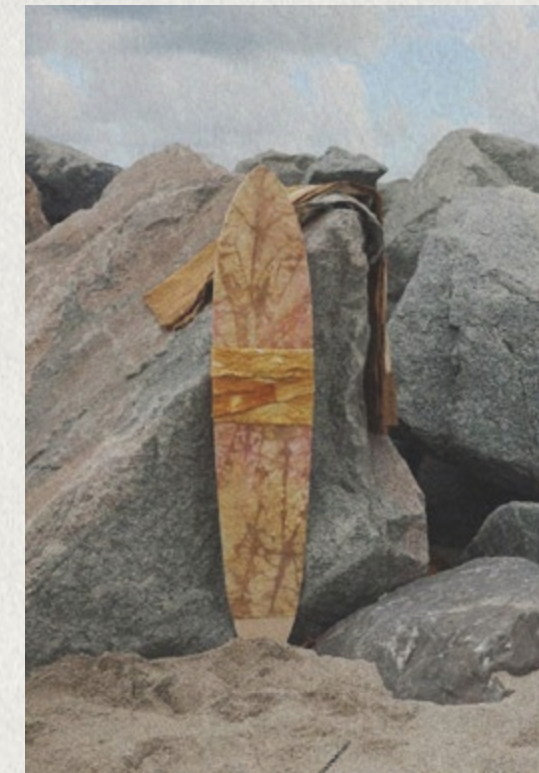
THE PRIMORDIAL SUBSTANCE FROM WHICH ALL THINGS ARE CREATED.



SURFING SHIVA SCULPTURES



ARLO



*Surfing Shiva*

A  
*Cosmic Tango*





2023





PHOTO BY MEGAN MCCLUER

## ARLO

ARLENE DELGADO IS A CUBAN-AMERICAN PAINTER AND DESIGNER BASED IN MIAMI BEACH. WITH A BACKGROUND IN VISUAL DESIGN, HER INTUITIVE PAINTINGS ON CANVAS ARE A LAYERED EXPLORATION OF TEXTURE, NATURAL ELEMENTS AND GEOMETRIC FORM THROUGH AN ABSTRACT LENS. WITH EACH PIECE, ARLENE ENJOYS EXPLORING THEMES OF POLARITY, INNER LANDSCAPES, PERCEPTION AND ALTERED STATES OF CONSCIOUSNESS.

*Arlo*



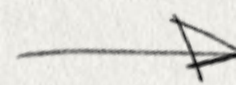
# PRIMA MATERIA

**THE PRIMORDIAL SUBSTANCE FROM WHICH  
ALL THINGS ARE CREATED.**

# THE SUBSTANCE FROM WHICH ALL THINGS ARE CREATED.



COLLECTION



Prima Materia, a new series of meditative color field paintings from artist Arlene Delgado, explores the energetic signature of moments through tones and texture. It is through the layering of each present moment that the fabric of our existence and the tapestry of our lives is woven.

Inspired by the psychedelic revolution of the 60s & 70's, these paintings mix a variation of hand dye and bleach dye techniques.

Dye, thread and bleach on raw canvas

COLLECTION  
ARTIST

PRIMA MATERIA  
ARLENE DELGADO

EMAIL  
LINK

ARLENE@ALTAR.STUDIO  
WWW.ARLENEDELGADO.COM



[ SCULPTures ]

Inspired by the surfing Shiva quote from BE HERE NOW these surf board sculptures are a meditation on asking if you surf through it all or carry it around like a load. A reminder that we have the ability to choose how we respond to each moment.

Please send all inquiries to [arlene@altar.studio](mailto:arlene@altar.studio)

*Do you surf  
through it all?*

**SURFING**

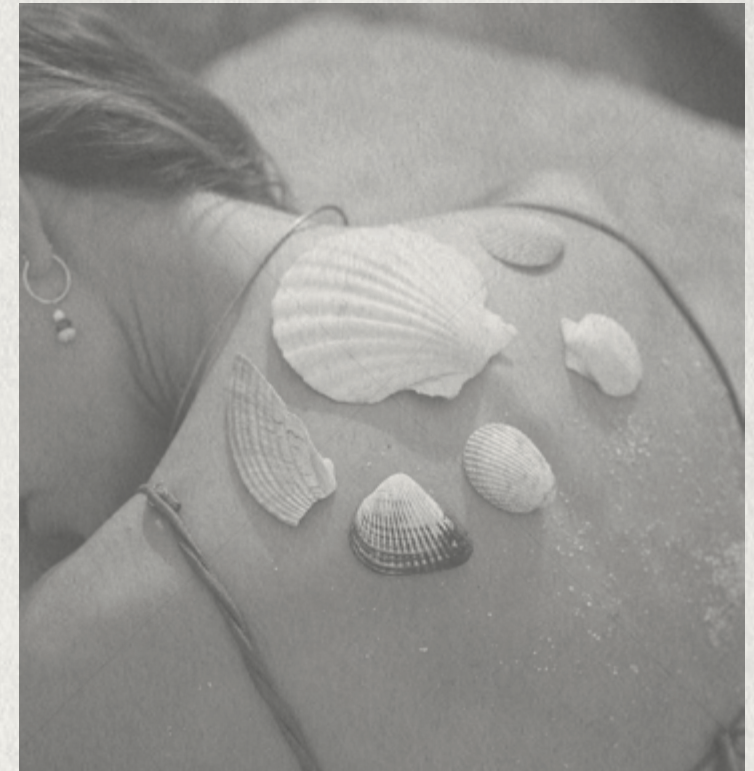
**SHIVA**



**NO.**

**01**

10" X 45"  
NATURAL WOOD FLOATER FRAME  
DYE, THREAD AND BLEACH  
ON RAW CANVAS  
\$555



*Or do you carry  
it around like a  
load?*





↖ *Be Here Now*

NO 03 + NO.01

SURFING SHIVA

ARLO

AVAILABLE WORKS

IG. @  
WWW.

ARLENETIME  
ARLENEDELGADO.COM



↖ *Natural textures*

02

PHOTO BY MEGAN MCCLUER

Inspired by the surfing Shiva quote from BE HERE NOW these surf board sculptures are a meditation on asking if you surf through it all or carry it around like a load. A reminder that we have the ability to choose how we respond to each moment.

Please send all inquiries to [arlene@altar.studio](mailto:arlene@altar.studio)

**SURFING**

**SHIVA**



**NO.**

**02**

10" X 45"  
NATURAL WOOD FLOATER FRAME  
DYE, THREAD AND BLEACH  
ON RAW CANVAS  
\$555

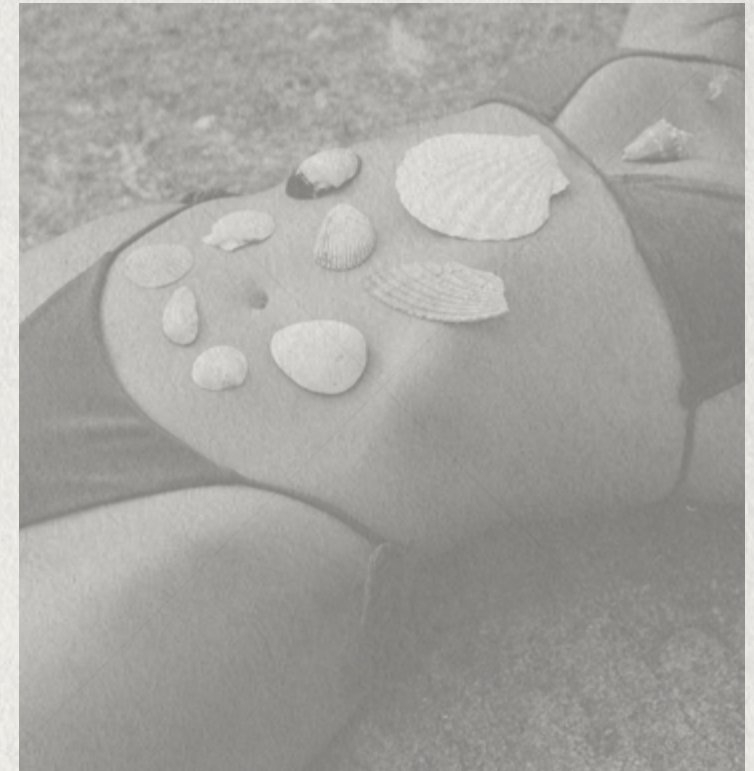




PHOTO BY

MEGAN MCCLUER



NO.02

SURFING SHIVA

Inspired by the surfing Shiva quote from BE HERE NOW these surf board sculptures are a meditation on asking if you surf through it all or carry it around like a load. A reminder that we have the ability to choose how we respond to each moment.

Please send all inquiries to  
arlene@altar.studio

**SURFING**

**SHIVA**



**NO.**

**03**

10" X 45"  
NATURAL WOOD FLOATER FRAME  
DYE, THREAD AND BLEACH  
ON RAW CANVAS  
\$555

# [ PAINT *ings* ]

Prima Materia, a new series of meditative color field paintings from artist Arlene Delgado, explores the energetic signature of each present moment through tones and texture. It is through the layering of each present moment that the fabric of our existence and the tapestry of our lives is weaved.

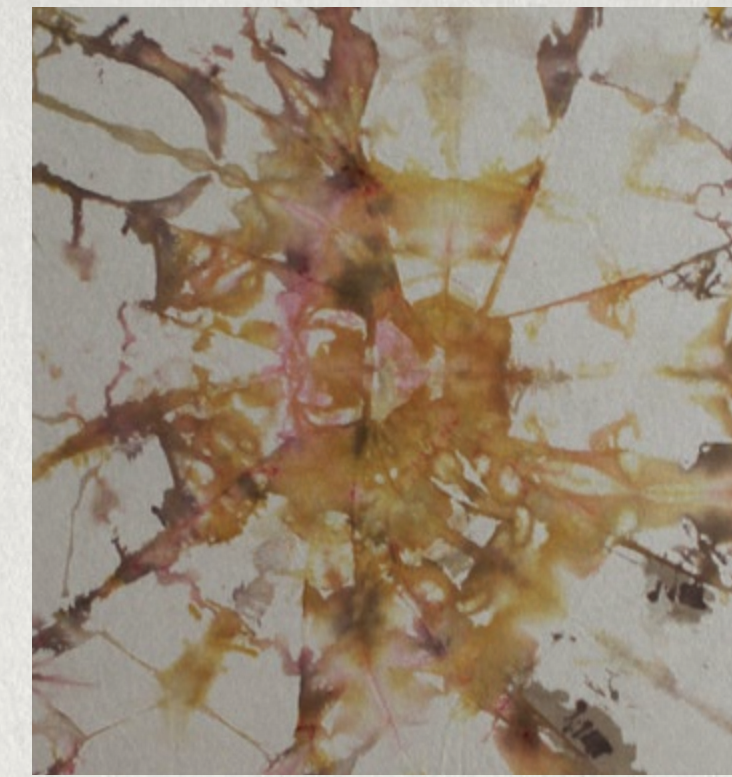
Please send all inquiries to  
arlene@altar.studio







31" X 47"  
NATURAL WOOD FLOATER FRAME  
DYE, THREAD AND BLEACH  
ON RAW CANVAS  
\$1900



To be human is to be thrust into the comic tango of life. We don't really know what's going on here but we dance through it all anyway.



20—23





## LSD ON LAGUNA BEACH

31" X 47"  
NATURAL WOOD FLOATER FRAME  
DYE, THREAD AND BLEACH  
ON RAW CANVAS  
\$1900

The pandemic was still in full swing and we decided to drop LSD on Laguna Beach and watch the sunset.

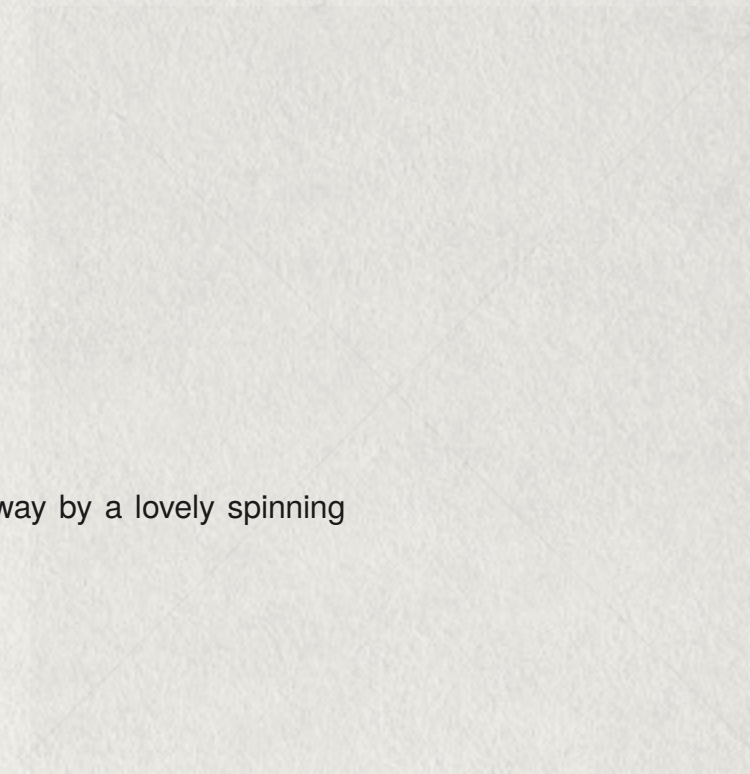
20—23



## KUNDALINI SPINS

31" X 47"  
NATURAL WOOD FLOATER FRAME  
DYE, THREAD AND BLEACH  
ON RAW CANVAS  
\$1900

Every once in a while during a meditation I'm swept away by a lovely spinning sensation I've coined the Kundalini spins.



20—23

Prima Materia, a new series of meditative color field paintings from artist Arlene Delgado, explores the energetic signature of each present moment through tones and texture. It is through the layering of each present moment that the fabric of our existence and the tapestry of our lives is weaved.

Please send all inquiries to  
arlene@altar.studio





## SAN PEDRO AT DUSK

24" X 36"  
NATURAL WOOD FLOATER FRAME  
DYE, THREAD AND BLEACH  
ON RAW CANVAS  
\$1250

We flipped a phone. Heads up and we'd embark on a 12 hour San Pedro journey. Heads down we'd pass on the experience. The phone landed heads down. We tested fate and went anyway.

20—23

©

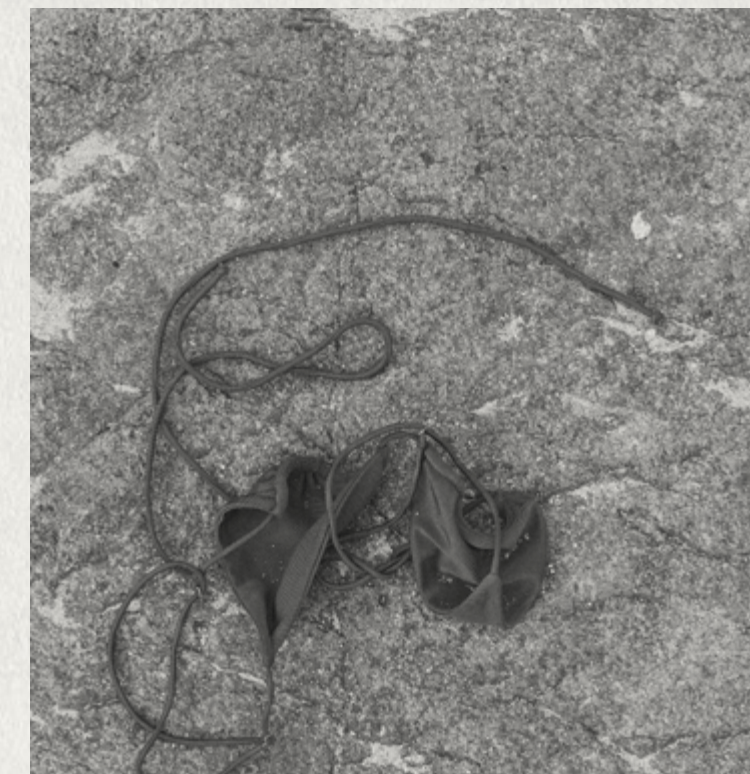
ARLO 2023



## SUNSET JELLYFISH STING

24" X 36"  
NATURAL WOOD FLOATER FRAME  
DYE, THREAD AND BLEACH  
ON RAW CANVAS  
\$1250

We went for an early morning skinny dip. Everything about that moment was perfect. The sun was shining and we were in love. Suddenly I was violently groped by a jelly fish.



20—23

©

ARLO 2023







## CHECKERS NOT CHESS

24" X 36"  
NATURAL WOOD FLOATER FRAME  
DYE, THREAD AND BLEACH  
ON RAW CANVAS  
\$1250

By releasing the desire to be calculated and strategic to achieve outcomes we just allow life to flow and surrendering to each moment.

20—23

©

ARLO 2023

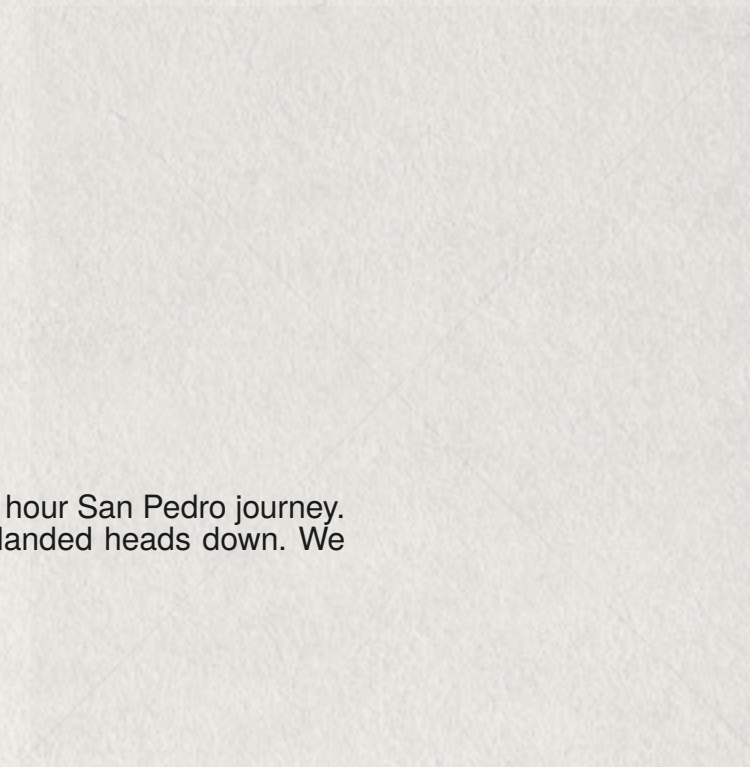




## SAN PEDRO AT DAWN

24" X 36"  
NATURAL WOOD FLOATER FRAME  
DYE, THREAD AND BLEACH  
ON RAW CANVAS  
\$1200

We flipped a phone. Heads up and we'd embark on a 12 hour San Pedro journey. Heads down we'd pass on the experience. The phone landed heads down. We tested fate and went anyway.



20—23

[21—22]



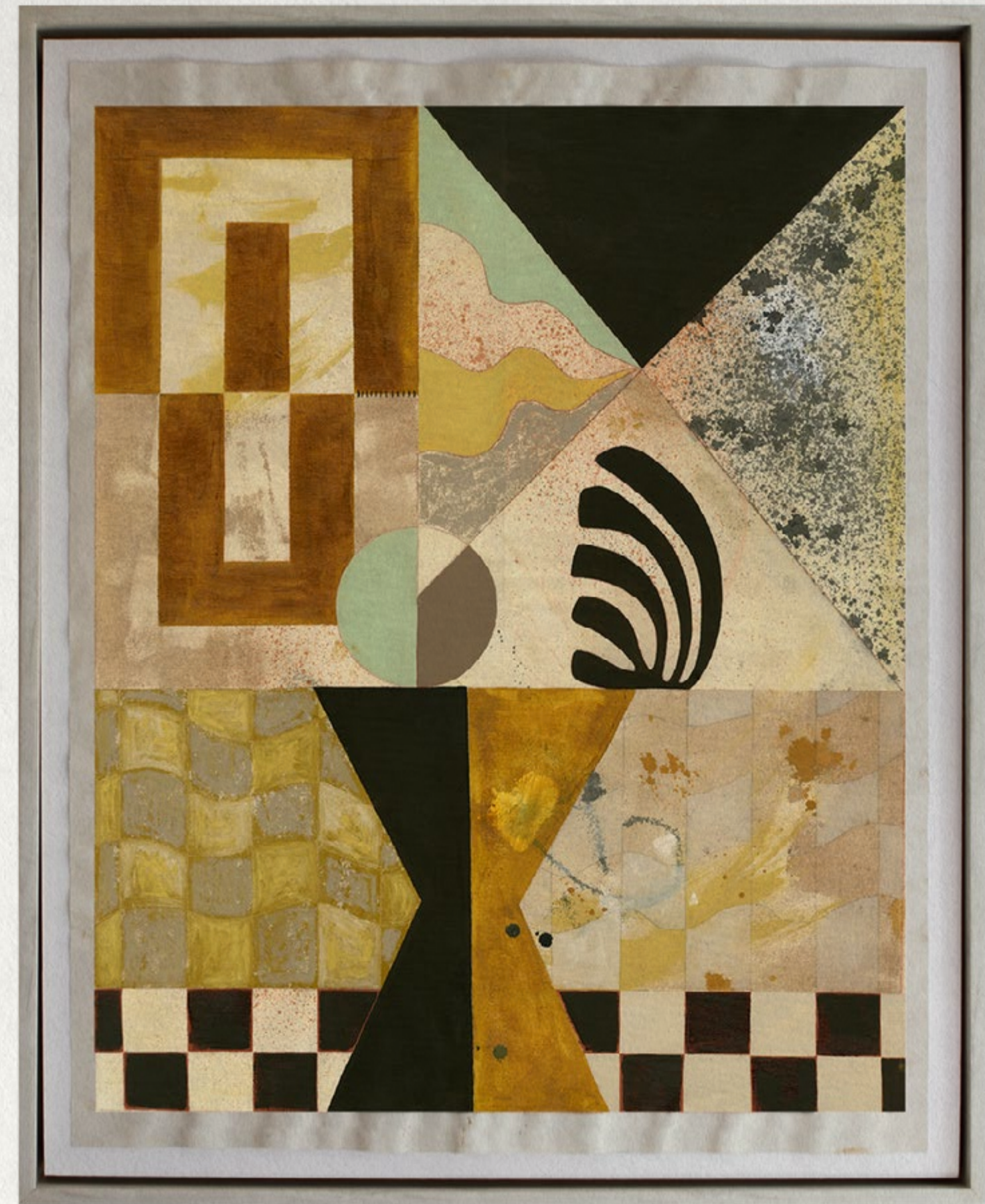
Terrestrial Matter illuminates the connection between the raw, earthly materials from which it is composed and the grandeur of the universe that surrounds us. It invites us to meditate on our place in the grand design, to ponder the meaning of our existence, and to appreciate the beauty of the world around us. Terrestrial Matter is a meditation on the forces that shape our world and the way we perceive it.

Please send all inquiries to  
arlene@altar.studio



## TERRESTRIAL MATTER

35.25" X 28"  
WHITE WASH WOOD FLOATER FRAME  
ACRYLIC ON RAW CANVAS  
\$1200



Psychedelic Sunrise is an original acrylic painting on raw canvas that comes with a light wood floater frame and no glass, exposing its textures and raw edges. The painting depicts an otherworldly interpretation of a sunrise experience. Bold and vibrant colors create an ethereal vibe that captures the essence of a psychedelic sunrise. The intricate patterns and use of warm colors provide a sense of energy and optimism, bringing a feeling of hope and new beginnings.

Please send all inquiries to  
arlene@altar.studio



## PSYCHEDELIC SUNRISE

29.5" X 17"  
WHITE WASH WOOD FLOATER FRAME  
ACRYLIC ON RAW CANVAS  
\$750





**ENERGY  
WORK**

24" X 30"  
NO FRAME  
ACRYLIC ON RAW CANVAS  
\$750





01

PHOTO BY MEGAN MCCLUER

[ THANK *you* ]